

I

Introduction

II

Features

III

DLC works

IV

Specifications

V

Dimensions

VI

Digital indicator

VII

Applications



CAS WBK-D loadcell is designed for use in vehicle scales and other heavy-capacity weighing application.

It is a stainless steel compression load cell with a digital output signal.

Via the digital output, the user can communicate with each loadcell independently from the others and have advantages of a calibration, a corner compensation, fault finding and a load cell replacement of a system.



Stainless steel component



Environmental protection IP68 with complete hermetic sealing



High accuracy & 300,000 counts of high rated output



Built-in Digital filtering Firmware



Self-diagnosis function



Built-in lightning protection



Easy communication and strong digital output signal (RS485)

Simple installation and effective maintenance

✓ **Stainless steel component**

- Ideal for heavy duty
- Anti-corrosion construction

✓ **Environmental protection IP68 with complete hermetic sealing**

- Available even in the wettest and harshest environment

✓ **Diagnosis function**

- Monitoring performance and Fault findings

✓ **Easy communication and strong digital output signal**

- Easy calibration
- Resisting external electronic noise / Max. transmission distance : 1000m

✓ **Built-in lightning protection**

- Protecting all internal electronic components from damage



✓ High accuracy & 300,000 counts of rated output

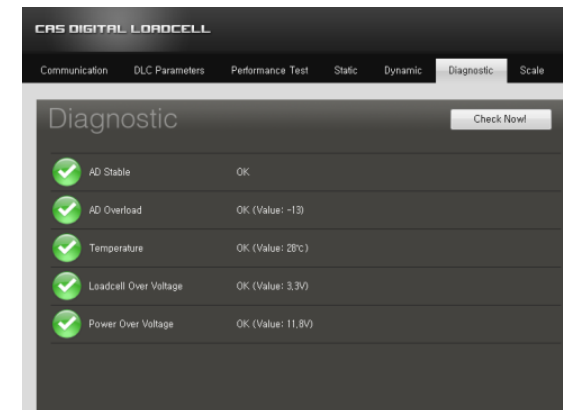
- WBK-D has 5000d and better performance than analog loadcell

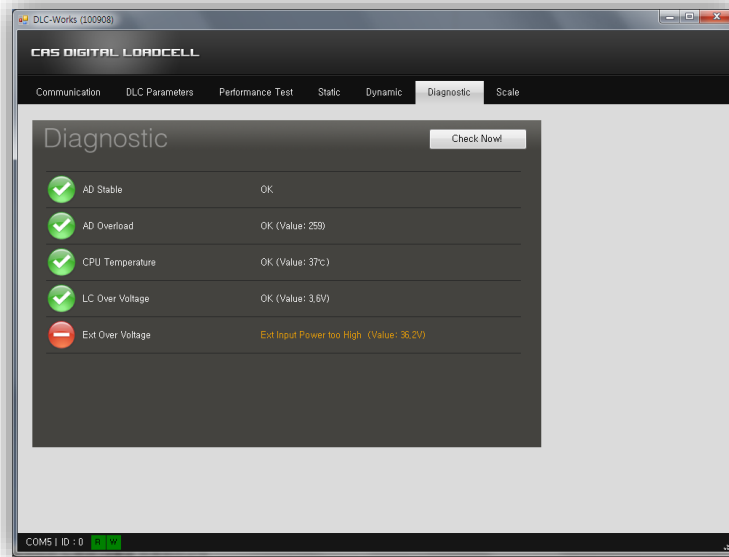
✓ Simple and easy installation of weighing system

- Shortening installation time and cost with a digital junction box
- Easy to do 4 corner compensation by compensating one time per each corner.

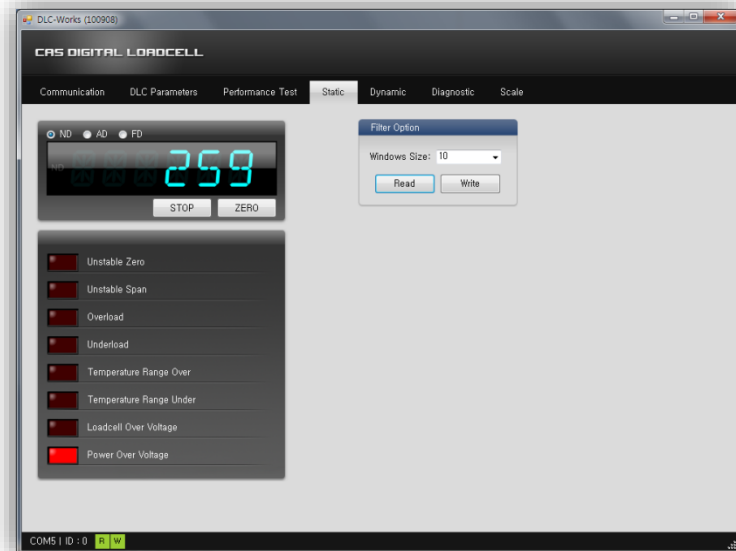
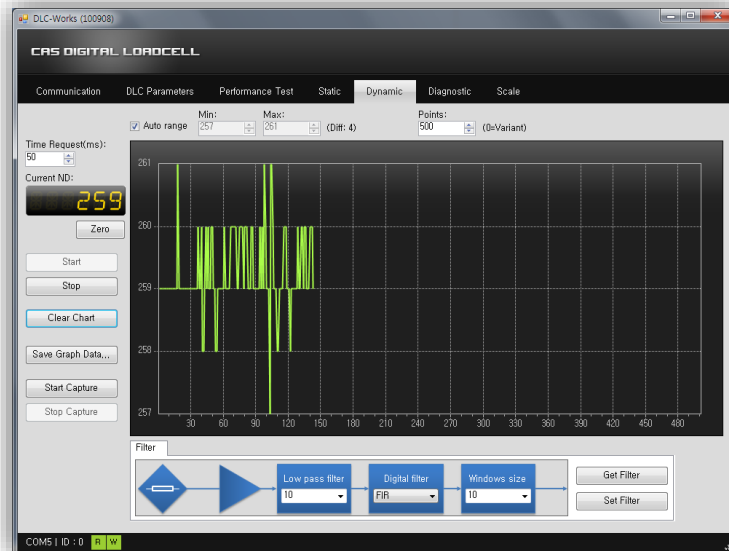
✓ Effective maintenance of weighing system

- Easy to check for faults
(by diagnosing via independent communication with PC or digital indicator)
- Convenient replacement of digital loadcell without re-calibration





- ✓ Digital loadcell Status Diagnosis function
- ✓ Set-up for parameter and filter
- ✓ Filter setting function
- ✓ Real-time data analysis of digital loadcell(graph)
- ✓ Data capture function
- ✓ Digital 4 corner compensation of system
- ✓ Weighing mode indication(Simple scale function)
 - Multi scale support

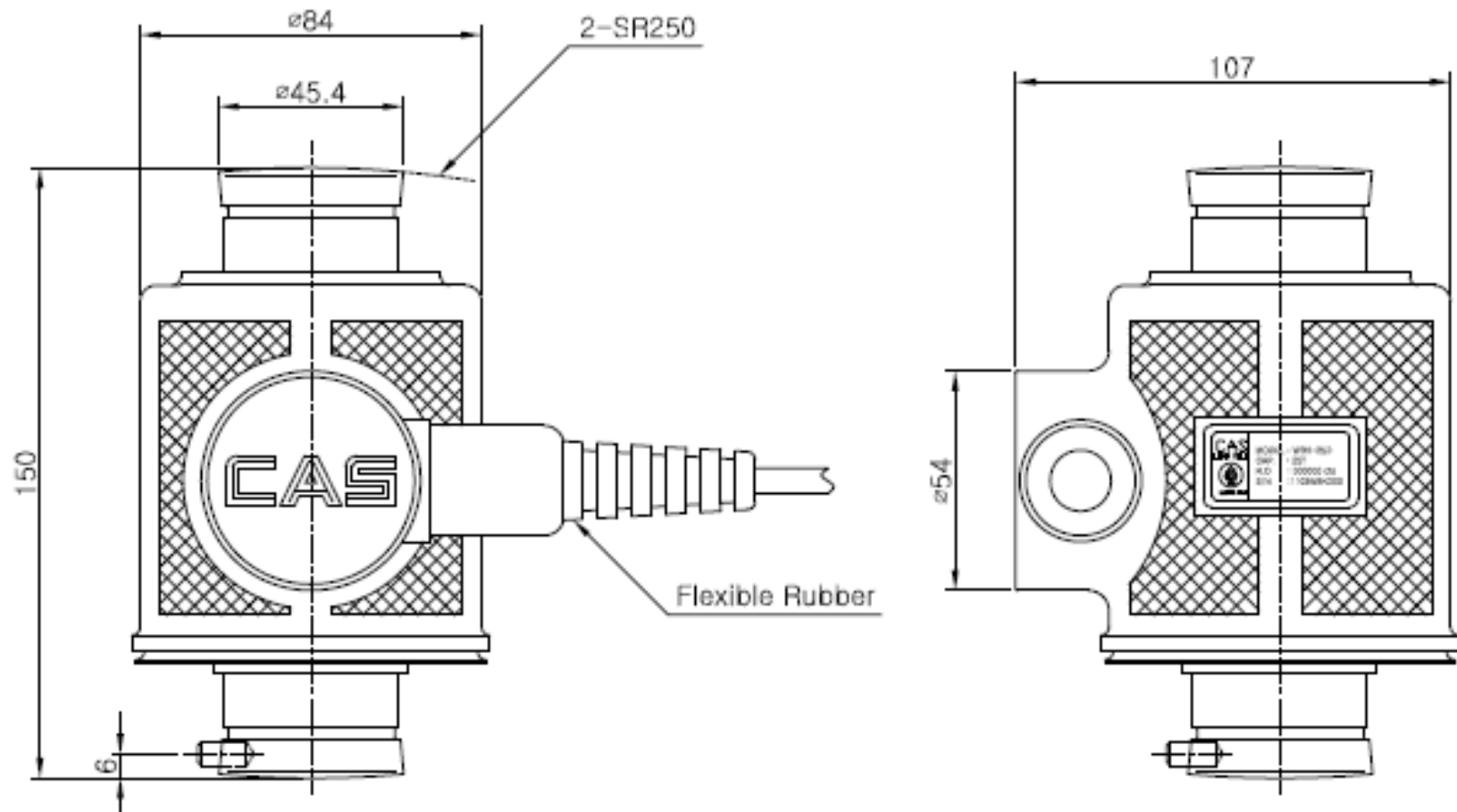


Specifications

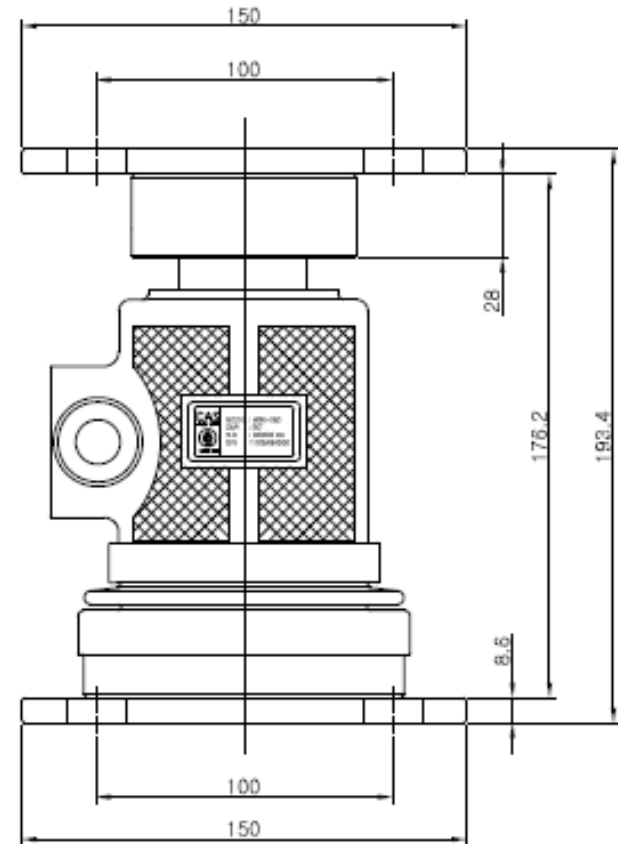
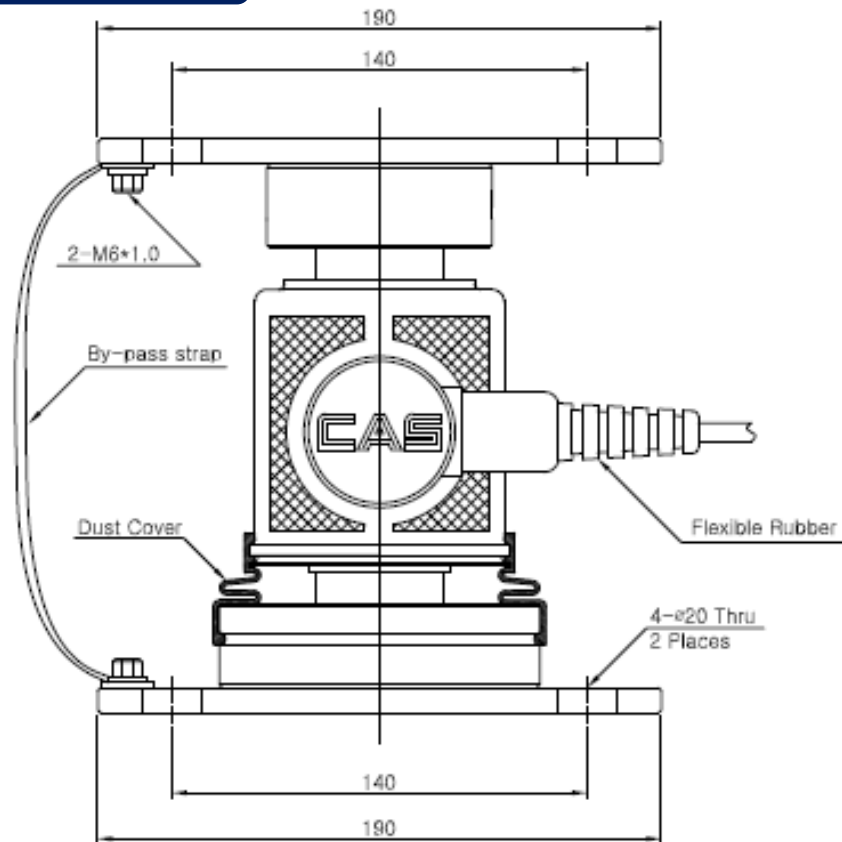
WE WEIGH THE WORLD™

Rated Capacity (R.L.)	t	10, 20, 25, 30
Maximum number of verification intervals(n)		5,000
Rated Output (R.O.)	counts	300,000
Zero Balance	counts	±300
Non-Linearity	%R.O.	<0.015
Hysteresis	%R.O.	<0.015
Combined Error	%R.O.	<0.015
Repeatability	%R.O.	<0.01
Creep for 30min	%R.O.	<0.017
Temperature Effect on		
Zero Value	%R.O./10°C	0.014
Output Value	%R.O./10°C	0.011
Compensated Temperature Range	°C	-10 to +40
Operating Temperature Range	°C	-30 to +60
Excitation Voltage		
Minimum	V	6
Recommended	V	9
Maximum	V	24
Insulation Resistance	MΩ	>2,000
Safety Overload	%R.C.	150
Material		Stainless steel
Protection class		IP68
Communication		RS485(2 wire)
Communication Rate	kbit/sec	19.2
Maximum Transmission Cable Length	m	1,000
Warm-up Time from Cold Start	minutes	15
asynchronous Interface Baudrate	Baud	9,600 ~ 115,200
Number of bus addresses		Max.32
Weight (G) with cable, approx.	kg	2.8

Loadcell



Accessory



● Features of Accessory

- Suitable for tank and weighbridge
- Loading & mounting bearing included
- Safe and compact design

CI-200D

- Digital Weighing indicator
- LED(CI-200D), LCD(CI-201D)
- Numeric keys
- RS232 port : 1EA
- Diagnosis function of Truck Scale
- DC adaptor and Rechargeable Battery Power
- Various application : Bench scale, Platform scale, Truck scale(weighbridge) etc.



NT-580D



- Digital weighing controller
- RS232 Port : 1EA
- External relay In/output : 6 input / 8 output ports
- Diagnosis function
- Setting set points
- Various applications : Platform scale, Truck scale, Hopper scale and Packing scale etc .
- Analog out (option) : 4~20mA or 0~10V

CI-200D series

Model	CI-200D(LED)	CI-201D(LCD)
Loadcell excitation voltage	DC 12V or 6V(battery)	
Loadcell connection	8 ea	
Battery life(continuous usage)	47 hours (in case that 1 digital is connected)	
Charging time	Approx. 12 hours	
Key	Numeric key & 5 Function key	
Display	6 Segment 1 inch LED	6 digit (with LED Backlight)
Below zero indication	`-` minus indication	
Power	AC 100~240V(DC 12V adaptor, 1.25A), 6V rechargeable battery	
Operating Temperature	-10 °C ~ 40 °C	
Product Size (WxDxH / mm)	206 x 91 x 139	
Product weight	Approx. 1.3 kg	
Interface(for general communication)	1 port for RS-232C	
Digital loadcell interface		
Interface(for digital loadcell)	RS-485 half-duplex	
Baud rate	9,600~115,200bps	

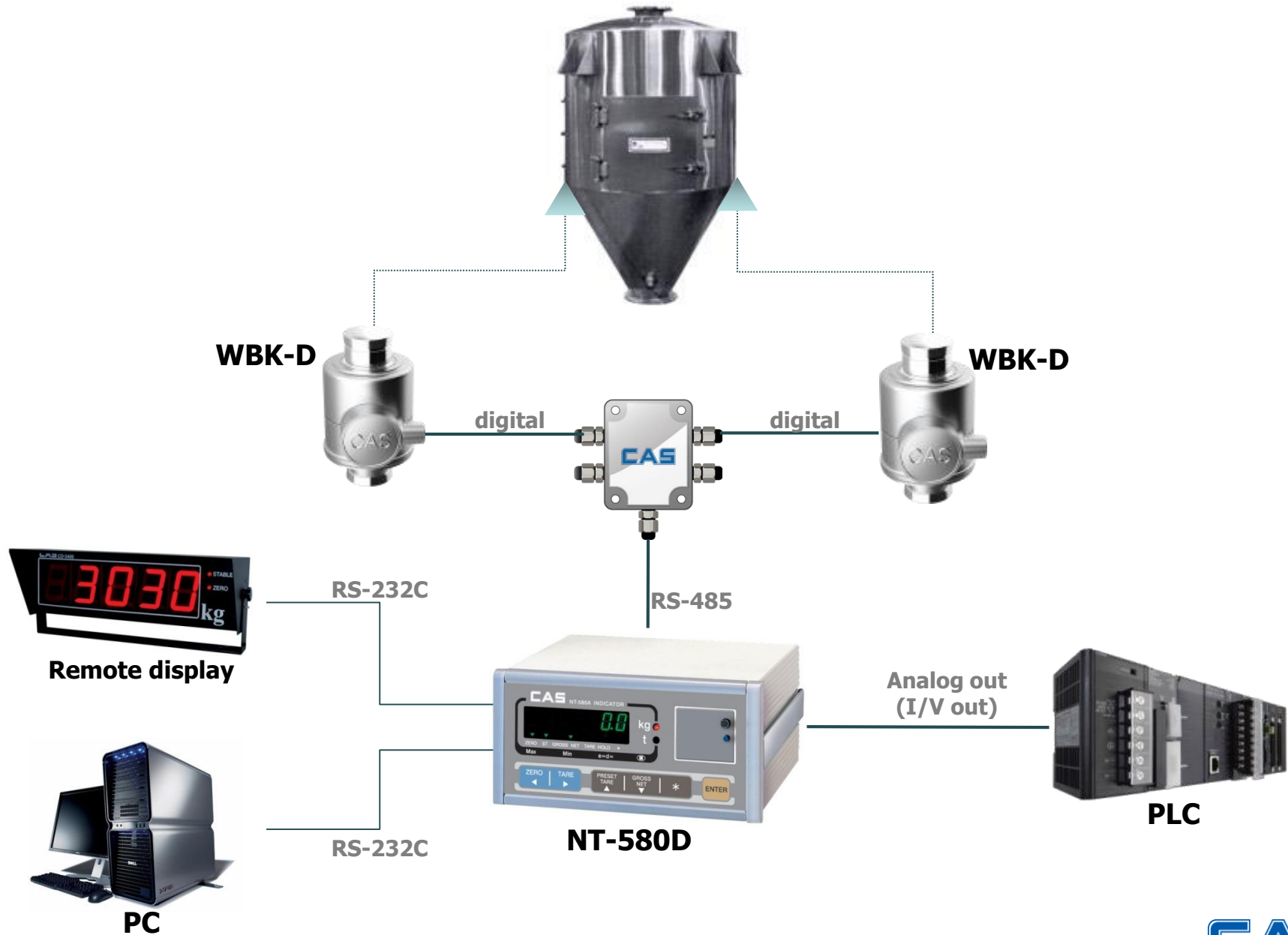
NT-580D

Model	NT-580A
Loadcell excitation voltage	DC 10V
Loadcell connection	8ea
Key	6 function keys
Display	7 digit VFD (letter height :13mm)
Below zero indication	"-" minus indication
Power	AC 85~264V, 50~60Hz
Operating Temperature	-10°C ~ 40°C
Product Size (WxDxH / mm)	185(W) X 168.5(D) X 90(H)
Product weight	Approx. 1.8 kg
Interface(for general communication)	2 ports for RS-232C(COM1, COM2)
External relay input	6 ea
External relay output	8 ea
Digital loadcell interface	
Interface(for digital loadcell)	RS-485 half-duplex
Baud rate	9,600~115,200bps

Applications(Truck scale)

WE WEIGH THE WORLD™





THANK YOU